

Transparent Level Gauge

The measurement system is based on the principle of communicating vessels. ATC Control transparent level gauge consists in a metal body, machined to have an internal chamber and one or more front windows, and optionally and a recommended source of light located at the back of the gauge.

Please fill in the required information:

Product: Clasificated Area (Y/N)

Specific Weight: s.w. Viscosity: cp

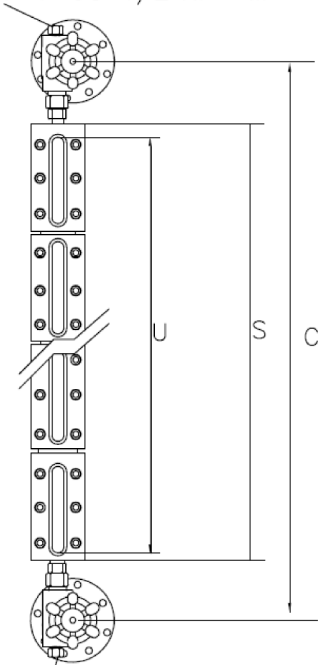
Temperature: Min. °C Work °C Max °C

Pressure: Min. bar Work bar Max bar

Centerline length "C": Minimum "S" + 150mm

Minimum Visibility required "U"

VENT PLUG 1/2"NPT-M



DRAIN PLUG 1/2"NPT-M

Ref: TLG- MP LL 17 YP T J 3 6 4 01, 04 HT, DY

Type

MP	PN40
HP	PN64

Connection Configuration

LL	Side-Side
BB	Back-Back
XX	Other, please specify

Size "S" "U"

Size	"S" Overall Length	"U" Visible Re
11	128	91
12	153	116
13	178	141
14	203	166
15	233	196
16	263	226
17	293	256
18	333	296
19	353	313
24	406	367
25	466	427
26	526	489
27	586	549
28	666	628
29	706	668
36	789	751
37	879	841
38	999	961
39	1059	1021
47	1172	1134
48	1332	1294
49	1412	1374
57	1465	1427
58	1665	1627
59	1765	1727
68	1998	1960
69	2118	2080
79	2471	2433

Ligthning

YP	Included IP65
YA	Included ATEX ExII 1GD
Si	Not Illuminator

Gaskets:

N	N.B.R.
T	Textile
G	Graphite/Mica

Body Material

A	Carbon Steel
J	AISI 316
X	Other, please specify

Options

Please Specify 2 digits code as located in table

HT, DY For example: HT, DY

HT	Hydrostatic test ASTM-E-1003-95 and certificate
DY	Dye penetrans test ASTM-E-1220-05 and certificate.
MS	Aluminium metric scale
UV	Uninterrupted visible length
SD	Special project requirements.

Doc.

Please Specify 2 digits code as located in table

01, 04 For example: 01, 04

01	Welding Book (WPS, PQR)
02	Material Certificate EN 10204 3.1
03	Dimensional drawings and parts in project format
04	Installation Manual
05	ATEX 94/9/EC compliance certificate and EC Mark co
06	Certificate of compliance and dimensional control
07	PED 97/23/EC compliance certificate
08	NACE certificate MR0175 / ISO 15156
09	Special project documentation requirements

Vent

1	1/2" NPT-F + PLUG
2	3/4" NPT-F + PLUG
3	VALVE 1/2"NPT-F + PLUG
4	VALVE 3/4"NPT-F + PLUG
5	VALVE 1/2" BW
6	VALVE 3/4" BW
7	Other, please specify

Drain

1	1/2" NPT-F + PLUG
2	3/4" NPT-F + PLUG
3	VALVE 1/2"NPT-F + PLUG
4	VALVE 3/4"NPT-F + PLUG
5	VALVE 1/2" BW
6	VALVE 3/4" BW
5	Other, please specify

Off-set Valves Connection

1	3/4" BW
2	3/4" SW
3	1 1/2" 150#
4	1 1/2" 300#
5	1 1/2" 600#
6	DN40 PN25
7	DN40 PN40
8	DN40 PN64
X	Other, please specify

Please specify here your X or XX selected:

Transparent Level Gauge

The measurement system is based on the principle of communicating vessels. ATC Control transparent level gauge consists in a metal body, machined to have an internal chamber and one or more front windows, and optionally and a recommended source of light located at the back of the gauge.

Please fill in the required information:

Product: Clasificated Area (Y/N)

Specific Weight: s.w. Viscosity: cp

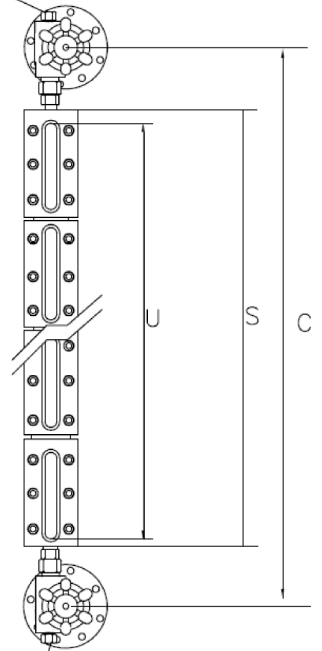
Temperature: Min. °C Work °C Max °C

Pressure: Min. bar Work bar Max bar

Centerline length "C": Minimum "S" + 150mm

Minimum Visibility required "U"

VENT PLUG 1/2"NPT-M



DRAIN PLUG 1/2"NPT-M

Ref: TLG- MP

Type

MP	PN40
HP	PN64

Connection Configuration

LL	Side-Side
BB	Back-Back
XX	Other, please specify

Size "S" "U"

Size	"S" Overall Length	"U" Visible Reading
11	128	91
12	153	116
13	178	141
14	203	166
15	233	196
16	263	226
17	293	256
18	333	296
19	353	313
24	406	367
25	466	427
26	526	489
27	586	549
28	666	628
29	706	668
36	789	751
37	879	841
38	999	961
39	1059	1021
47	1172	1134
48	1332	1294
49	1412	1374
57	1465	1427
58	1665	1627
59	1765	1727
68	1998	1960
69	2118	2080
79	2471	2433

Ligthing

YP	Included IP65
YA	Included ATEX ExII 1GD
SI	Not Illuminator

Gaskets:

N	N.B.R.
T	Textile
G	Graphite/Mica

Body Material

A	Carbon Steel
J	AISI 316
X	Other, please specify

Options

Please Specify 2 digits code as located in table
For example: HT, DY

HT	Hydrostatic test ASTM-E-1003-95 and certificate
DY	Dye penetrans test ASTM-E-1220-05 and certificate.
MS	Aluminium metric scale
UV	Uninterrupted visible length
SD	Special project requirements.

Doc.

Please Specify 2 digits code as located in table
For example: 01, 04

01	Welding Book (WPS, PQR)
02	Material Certificate EN 10204 3.1
03	Dimensional drawings and parts in project format
04	Installation Manual
05	ATEX 94/9/EC compliance certificate and EC Mark co
06	Certificate of compliance and dimensional control
07	PED 97/23/EC compliance certificate
08	NACE certificate MR0175 / ISO 15156
09	Special project documentation requirements

Vent

1	1/2" NPT-F + PLUG
2	3/4" NPT-F + PLUG
3	VALVE 1/2"NPT-F + PLUG
4	VALVE 3/4"NPT-F + PLUG
5	VALVE 1/2" BW
6	VALVE 3/4" BW
7	Other, please specify

Drain

1	1/2" NPT-F + PLUG
2	3/4" NPT-F + PLUG
3	VALVE 1/2"NPT-F + PLUG
4	VALVE 3/4"NPT-F + PLUG
5	VALVE 1/2" BW
6	VALVE 3/4" BW
5	Other, please specify

Off-set Valves Connection

1	3/4" BW
2	3/4" SW
3	1 1/2" 150#
4	1 1/2" 300#
5	1 1/2" 600#
6	DN40 PN25
7	DN40 PN40
8	DN40 PN64
X	Other, please specify

Please specify here your X or XX selected: