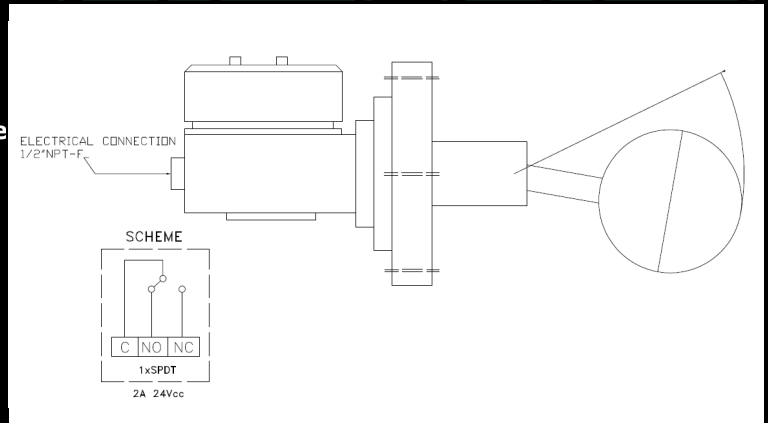


# Magnetic Level Switch

## Side Mounting Type

ATC control Magnetic Level Switch is float-operated working repulsion principle, leak proof and easy installation. Float mounted at one end of rigid rod provide point level sensing to initiate the switching function of high and low level.



Please fill next process informative:

Product:

Classificated Area (Y/N)

Specific Weight:  s.w. Viscosity:  cp

Temperature: Min.  °C Work  °C Max  °C

Pressure: Min.  bar Work  bar Max  bar

Length from the instant flange to the highest level of product:

Length from the instant flange to the lowest level of product:

Ref:SLS- 2 3 A S 02 2 01 HT

### Housing Protection and Material

1	Ex II 1GD Alluminium
2	IP65 Alluminium
3	Ex II 2 GD Alluminium

### Electrical Connection

1	1/2" NPT F
2	3/4" NPT F
3	M20 x 1,5

### Contacts

A	1 x SPDT
C	2 x SPDT

### Microswitch type

S	Standard
T	High Temperature
E	Sealed
X	Other, please specify

### Wet Parts Material

01	AISI 310
02	AISI 316L
03	AISI 321
04	Titanium
05	Enginered plastic
XX	Other, please specify

### Options

Please Specify 2 digits code as located in this table

HT	Hydrostatic test ASTM-E-1003-95 and certificate
SD	Special project requirements.

### Documentation

Please Specify 2 digits code as located in this table

01	Material Certificate EN 10204 3.1
02	Dimensional drawings and parts in project format
03	Installation Manual
04	ATEX 94/9/EC compliance certificate and EC Mark co
05	Certificate of compliance and dimensional control
06	PED 97/23 EC compliance certificate
07	Special project documentation requirements

### Connection Type

1	1 1/2" 150 # RF
2	1 1/2" 300 # RF
3	1 1/2" 600 # RF
4	Other, please specify

Please specify here your X or XX selected:

# Magnetic Level Switch

## Side Mounting Type

ATC control Magnetic Level Switch is float-operated working repulsion principle, leak proof and easy installation. Float mounted at one end of rigid rod provide point level sensing to initiate the switching function of high and low level.

Please fill next process informative:

Product:

Classificated Area (Y/N)

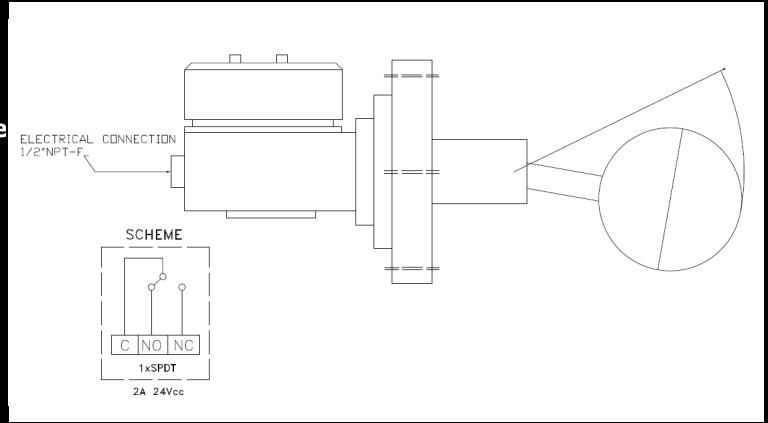
Specific Weight:  s.w. Viscosity:  cp

Temperature: Min.  °C Work  °C Max  °C

Pressure: Min.  bar Work  bar Max  bar

Length from the instant flange to the highest level of product:

Length from the instant flange to the lowest level of product:



Ref:SLS-

### Housing Protection and Material

- |   |                       |
|---|-----------------------|
| 1 | Ex II 1GD Alluminium  |
| 2 | IP65 Alluminium       |
| 3 | Ex II 2 GD Alluminium |

### Electrical Connection

- |   |            |
|---|------------|
| 1 | 1/2" NPT F |
| 2 | 3/4" NPT F |
| 3 | M20 x 1,5  |

### Contacts

- |   |          |
|---|----------|
| A | 1 x SPDT |
| C | 2 x SPDT |

### Microswitch type

- |   |                       |
|---|-----------------------|
| S | Standard              |
| T | High Temperature      |
| E | Sealed                |
| X | Other, please specify |

### Wet Parts Material

- |    |                       |
|----|-----------------------|
| 01 | AISI 310              |
| 02 | AISI 316L             |
| 03 | AISI 321              |
| 04 | Titanium              |
| 05 | Enginered plastic     |
| XX | Other, please specify |

### Options

Please Specify 2 digits code as located in this table

- |    |   |
|----|---|
| HT | Hydrostatic test ASTM-E-1003-95 and certificate |
| SD | Special project requirements.                   |

### Documentation

Please Specify 2 digits code as located in this table

- |    |  |
|----|--|
| 01 | Material Certificate EN 10204 3.1                  |
| 02 | Dimensional drawings and parts in project format   |
| 03 | Installation Manual                                |
| 04 | ATEX 94/9/EC compliance certificate and EC Mark co |
| 05 | Certificate of compliance and dimensional control  |
| 06 | PED 97/23 EC compliance certificate                |
| 07 | Special project documentation requirements         |

### Connection Type

- |   |                       |
|---|-----------------------|
| 1 | 1 1/2" 150 # RF       |
| 2 | 1 1/2" 300 # RF       |
| 3 | 1 1/2" 600 # RF       |
| 4 | Other, please specify |

Please specify here your X or XX selected: