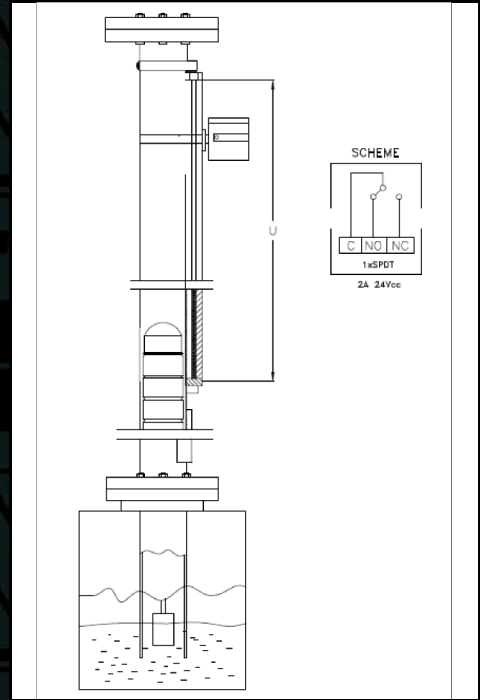


Magnetic Level Gauge

Low pressure, Direct Top Mounting

The top magnetic level gauge configuration consists in a direct flanged connection to the top of the vessel rather than other side. The float is connected via a connecting rod to the upper. ATC-Control manufactures a wide range of MDT level gauges for tanks with optional transmitters and switches. *The float will move up and down in the chamber as level rises or falls in the vessel on which it's attached.



Please fill in the required information:

Product: Clasificated Area (Y/N)

Specific Weight: s.w. Viscosity: cp

Temperature: Min. °C Work °C Max °C

Pressure: Min. bar Work bar Max bar

Length from the instant flange to the highest level of product:

Length from the instant flange to the lowest level of product:

Please specify size and rating from the tank nozzle:

Minimum Visibility required "U"

Ref:MDT- **P** **06** **F** **FL** **2** **904** **01,03** **HT, AJ**

Float Material

A	316
P	Engineered plastic
X	Other, please Specify

Flange Rating

ANSI		DIN	
015	ANSI 150#	D15	PN 16
030	ANSI 300#	D30	PN 25
XX	Other, please specify		

Size Connection

ANSI		DIN	
A	2"	D	DN 50
B	3"	E	DN 75
C	4"	F	DN 100
X	Other, please specify		

Indicator type

FL	Bicolour-Flag
FR	Follower

Vent Connection

1	1/2" NPT-F + (SS) PLUG
2	3/4" NPT-F + (SS) PLUG

Vessel Material

316	AISI 316/L
304	AISI 304/L
276	Alloy 276
904	AISI 904L
TIT	Titanium
XX	Other, Please Contact Factory

Options

Please Specify 2 digits code as located in this table

HT, AJ		Example: HT, AJ
HT	Hydrostatic test ASTM-E-1003-95 and certificate	
XR	X-ray inspection test and certificate	
PI	Positive material identification test (PMI) and certificate.	
DY	Dye penetrans test ASTM-E-1220-05 and certificate.	
NT	Hardness test and certificate	
PC	PTFE coated	
AJ	Set point adjustment and certificate	
AL	Air cooler extension	
IA	IP 65 adjustable level switch	
MS	Aluminium metric scale	
LT	Level transmitter with Hart communication and certificate	
SD	Special project requirements	

Documentation

Please Specify 2 digits code as located in this table

01,03		For example: 02,03
01	Welding Book (WPS, PQR)	
02	Material Certificate EN 10204 3.1	
03	Dimensional drawings and parts in project format	
04	Installation Manual	
05	ATEX 94/9/EC compliance certificate and EC Mark co	
06	Certificate of compliance and dimensional control	
07	PED 97/23/EC compliance certificate	
08	NACE certificate MR0175 / ISO 15156	
09	Special project documentation requirements	

Please specify here your X or XX selected:

Magnetic Level Gauge

Low pressure, Direct Top Mounting

The top magnetic level gauge configuration consists in a direct flanged connection to the top of the vessel rather than other side. The float is connected via a connecting rod to the upper. ATC-Control manufactures a wide range of MDT level gauges for tanks with optional transmitters and switches. *The float will move up and down in the chamber as level rises or falls in the vessel on which it's attached.

Please fill in the required information:

Product: Clasificated Area (Y/N)

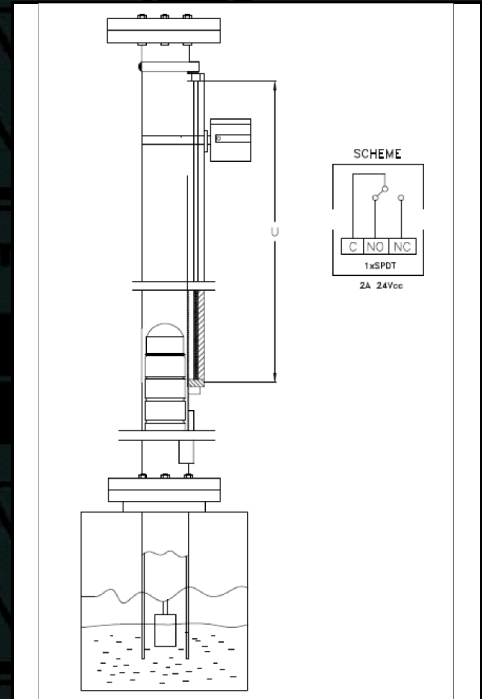
Specific Weight: s.w. Viscosity: cp
 Temperature: Min. °C Work °C Max °C
 Pressure: Min. bar Work bar Max bar

Length from the instant flange to the highest level of product:

Length from the instant flange to the lowest level of product:

Please specify size and rating from the tank nozzle:

Minimum Visibility required "U"



Ref:MDT-

Float Material

A	316
P	Engineered plastic
X	Other, please Specify

Flange Rating

ANSI		DIN	
015	ANSI 150#	D15	PN 16
030	ANSI 300#	D30	PN 25
XX	Other, please specify		

Size Connection

ANSI		DIN	
A	2"	D	DN 50
B	3"	E	DN 75
C	4"	F	DN 100
X	Other, please specify		

Indicator type

FL	Bicolour-Flag
FR	Follower

Vent Connection

1	1/2" NPT-F + (SS) PLUG
2	3/4" NPT-F + (SS) PLUG

Vessel Material

316	AISI 316/L
304	AISI 304/L
276	Alloy 276
904	AISI 904L
TIT	Titanium
XX	Other, Please Contact Factory

Options

Please Specify 2 digits code as located in this table
 Example: HT, AJ

HT	Hydrostatic test ASTM-E-1003-95 and certificate
XR	X-ray inspection test and certificate
PI	Positive material identification test (PMI) and certificate.
DY	Dye penetrans test ASTM-E-1220-05 and certificate.
NT	Hardness test and certificate
PC	PTFE coated
AJ	Set point adjustment and certificate
AL	Air cooler extension
IA	IP 65 adjustable level switch
MS	Aluminium metric scale
LT	Level transmitter with Hart communication and certificate
SD	Special project requirements

Documentation

Please Specify 2 digits code as located in this table
 For example: 02,03

01	Welding Book (WPS, PQR)
02	Material Certificate EN 10204 3.1
03	Dimensional drawings and parts in project format
04	Installation Manual
05	ATEX 94/9/EC compliance certificate and EC Mark co
06	Certificate of compliance and dimensional control
07	PED 97/23/EC compliance certificate
08	NACE certificate MR0175 / ISO 15156
09	Special project documentation requirements

Please specify here your X or XX selected: