

Magnetic Level Gauge MPP

The magnetic MPP is mainly used to measure gases, but sometimes also used for liquids and vapors. It has a low pressure drop, long term stability and broad measurement ranges. Side connection, vessel material PP + PVC + Nylon gaskets PTFE. ATC-Control recommend this product for corrosive product at low pressure and temperature conditions.

Please fill in the required information:

Product: Clasificated Area (Y/N)

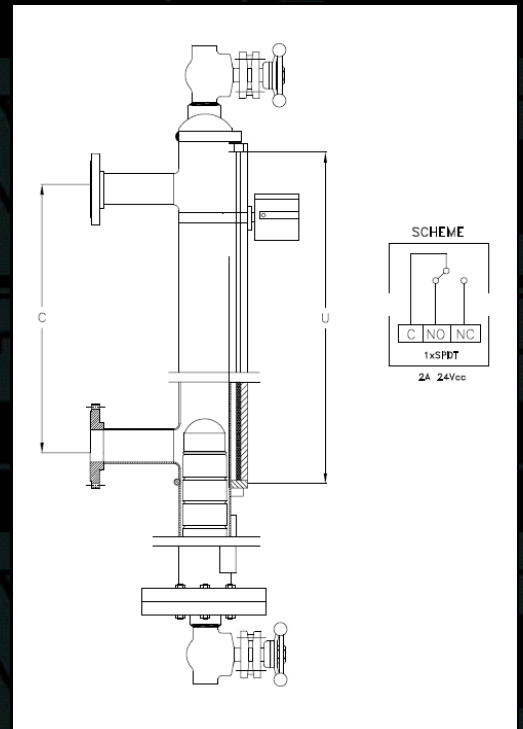
Specific Weight: s.w. Viscosity: cp

Temperature: Min. °C Work °C Max °C

Pressure: Min. bar Work bar Max bar

Centerline length "C":

Minimum Visibility required "U"



Ref: MPP- P 06 FD FL 2 2 01,03 HT, AJ

Float Material

A	316
P	Engineered plastic
X	Other, please Specify

Instrument Connection

ANSI		DIN	
03	3/4" NPT -M	D03	3/4" BSP -F
06	1" NPT - F	D06	1" BSP - F
09	1" ANSI 150 #	D09	DN 25 PN 16
15	1 1/2" ANSI 150 #	D15	DN 40 PN 16
XX	Other, please specify		

Tank Connection

FD	Flanged
TH	Threaded

Indicator

FL	Bicolour-Flag
FR	Follower

Drain

1	1/2" BSP-F + PLUG
2	3/4" BSP-F + PLUG

Vent

1	1/2" BSP-F + PLUG
2	3/4" BSP-F + PLUG

Options

Please Specify 2 digits code as located in the table

HT, AJ		For example: HT, AJ, MS
HT	Hydrostatic test ASTM-E-1003-95 and certificate	
RV	Forged root valves.	
PC	PTFE coated	
AJ	Set point adjustment and certificate	
DV	Extra Drain/vent valves (please specify material)	
IA	IP 65 adjustable level switch	
MS	Aluminium metric scale	
LT	Level transmitter with Hart communication and calibration certificate	
SD	Special project requirements	

Documentation

Please Specify 2 digits code as located in the table

01,03		For example: 01, 03
01	Dimensional drawings and parts in project format.	
02	Installation manual.	
03	Certificate of compliance and dimensional control.	
04	PED 97/23/EC compliance certificate.	
05	Special project documentation requirements.	

Please specify here your X or XX selected:

Magnetic Level Gauge MPP

The magnetic MPP is mainly used to measure gases, but sometimes also used for liquids and vapors. It has a low pressure drop, long term stability and broad measurement ranges. Side connection, vessel material PP + PVC + Nylon gaskets PTFE. ATC-Control recommend this product for corrosive product at low pressure and temperature conditions.

Please fill in the required information:

Product: Clasificated Area (Y/N)

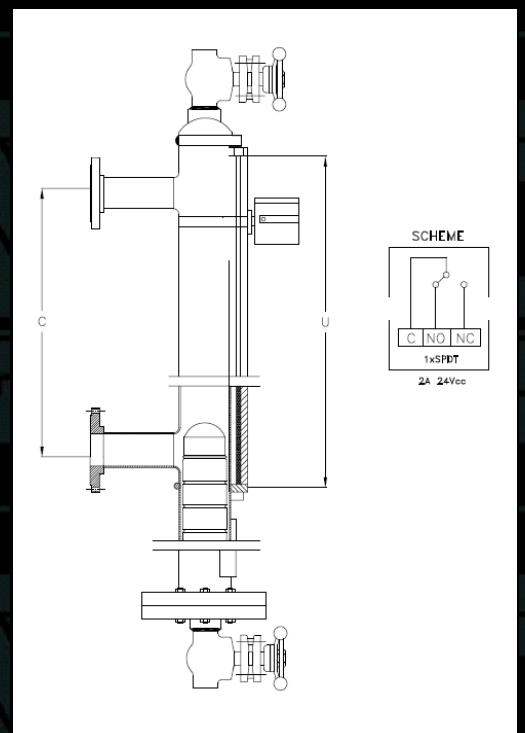
Specific Weight: s.w. Viscosity: cp

Temperature: Min. °C Work °C Max °C

Pressure: Min. bar Work bar Max bar

Centerline length "C":

Minimum Visibility required "U"



Ref: MPP-

Float Material

- A 316
- P Engineered plastic
- X Other, please Specify

Instrument Connection

ANSI		DIN	
03	3/4" NPT -M	D03	3/4" BSP -F
06	1" NPT - F	D06	1" BSP - F
09	1" ANSI 150 #	D09	DN 25 PN 16
15	1 1/2" ANSI 150 #	D15	DN 40 PN 16
XX	Other, please specify		

Tank Connection

- FD Flanged
- TH Threaded

Indicator

- FL Bicolour-Flag
- FR Follower

Drain

- 1 1/2" BSP-F + PLUG
- 2 3/4" BSP-F + PLUG

Vent

- 1 1/2" BSP-F + PLUG
- 2 3/4" BSP-F + PLUG

Options

Please Specify 2 digits code as located in the table

For example: HT, AJ, MS

- HT Hydrostatic test ASTM-E-1003-95 and certificate
- RV Forged root valves.
- PC PTFE coated
- AJ Set point adjustment and certificate
- DV Extra Drain/vent valves (please specify material)
- IA IP 65 adjustable level switch
- MS Aluminium metric scale
- LT Level transmitter with Hart communication and calibration certificate
- SD Special project requirements

Documentation

Please Specify 2 digits code as located in the table

For example: 01, 03

- 01 Dimensional drawings and parts in project format.
- 02 Installation manual.
- 03 Certificate of compliance and dimensional control.
- 04 PED 97/23/EC compliance certificate.
- 05 Special project documentation requirements.

Please specify here your X or XX selected: