

# External Chamber Type

It is a simple and standard of alarm used when it is required to detect a limit level (high, low, for a permissive or interlocking, etc.). The signal output is a contact that changes state when the liquid reaches the point where the float is calibrated. ATC-Control manufactured chamber level switch for boiler applications according to ASME B 31.1 code for pressure piping.

Please fill in the required information:

Product:  Classified Area (Y/N)

Specific Weight:  s.w. Viscosity:  cp

Temperature: Min.  °C Work  °C Max  °C

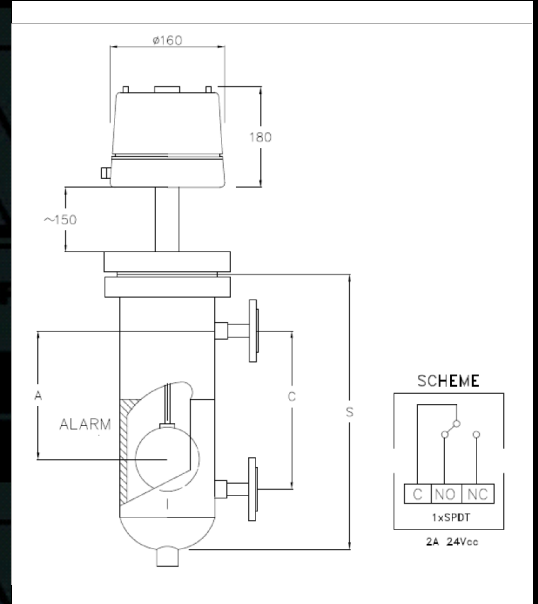
Pressure: Min.  bar Work  bar Max  bar

Length from the instant flange to the highest level of product:

Length from the instant flange to the lowest level of product:

Alarm set distance from upper conn. centerline "A" minimum 70mm:

Centerline length "C":



Ref: ELS- 2 3 B G A S 1 9 SB 014 02, 04 DY, NT

### Housing Protection and Material

1	Ex II 1GD Alluminium
2	IP67 Alluminium
3	Ex II 2 GD Alluminium

### Electrical Connection

1	1/2" NPT F x 1
2	1/2" NPT F x 2
3	3/4" NPT F x 1
4	3/4" NPT F x 2
5	M20 x 1,5 x 2

### Contacts

A	1 x SPDT
B	2 x SPDT
C	1 x DPDT
D	2 x DPDT

### Switch Type

S	Standard
H	Hermetically Sealed
T	High Temperature
G	Golden Contacts
E	Sealed
X	Other, please specify

### Float Material:

A	316 SS	380°
B	Titanium	400°
X	Other, please specify	

### Chamber Type

S	Sealed
F	Flanged Head

### Drain Connection

1	1/2" NPT-F + (SS) PLUG
2	3/4" NPT-F + (SS) PLUG

### Options

Please Specify 2 digits code as located in this table

DY, NT

HT	Hydrostatic test ASTM-E-1003-95 and certificate
XR	X-ray inspection test and certificate
PI	Positive material identification test (PMI) and certificate.
DY	Dye penetrans test ASTM-E-1220-05 and certificate.
NT	Hardness test and certificate
RV	Forged root valves.
PC	PTFE coated
WT	Welding treatment and certificate.
SP	Special protective painting.
AJ	Set point adjustment and certificate.
AL	Air cooler extension.
SD	Special project requirements.

### Documentation

Please Specify 2 digits code as located in this table

02, 04

01	Welding Book (WPS, PQR)
02	Material Certificate EN 10204 3.1
03	Dimensional drawings and parts in project format
04	Installation Manual
05	ATEX 94/9/EC compliance certificate and EC Mark co
06	Certificate of compliance and dimensional control
07	PED 97/23/EC compliance certificate
08	Special project documentation requirements

### Chamber Material

014

Please Specify 3 digits code as located in Material table (pag 10), example: 014 | Hastelloy

### Process Connection Configuration

SB	Side & Bottom
SS	Side & Side

### Process Connection Rating

	ANSI	DIN
1	1" 150# B 16.5/ B.S. 1560	11 PN16 -DN25
2	1" 300# B 16.5/ B.S. 1560	12 PN25/40 -DN25
4	1 1/2" 150# B 16.5/ B.S. 1560	13 PN16 -DN40
5	1 1/2" 300# B 16.5/ B.S. 1560	14 PN25/40 -DN40
7	1" 3000#. SW	15 PN40 -DN40
8	1" 3000#. BW	
9	1 1/2" 3000#. BW	
10	1 1/2" 3000#. SW	
XX	Other, please specify	

Please specify here your X or XX selected:

# External Chamber Type

It is a simple and standard of alarm used when it is required to detect a limit level (high, low, for a permissive or interlocking, etc.). The signal output is a contact that changes state when the liquid reaches the point where the float is calibrated. ATC-Control manufactured chamber level switch for boiler applications according to ASME B 31.1 code for pressure piping.

Please fill in the required information:

Product:  Clasificated Area (Y/N)

Specific Weight:  s.w. Viscosity:  cp

Temperature: Min.  °C Work  °C Max  °C

Pressure: Min.  bar Work  bar Max  bar

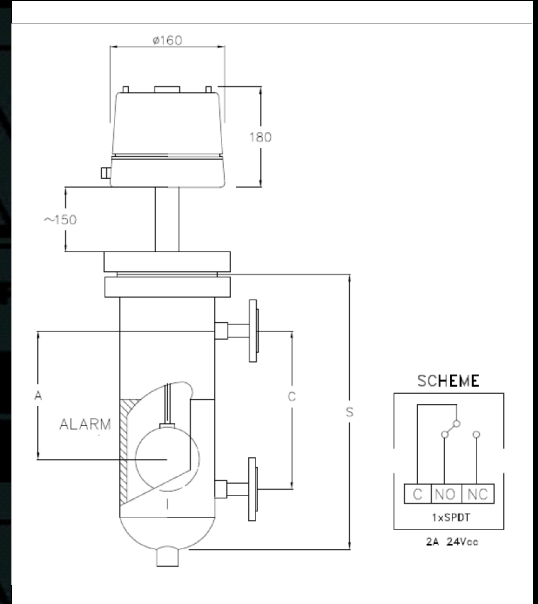
Length from the instant flange to the highest level of product:

Length from the instant flange to the lowest level of product:

Alarm set distance from upper conn. centerline "A" minimum 70mm:

Centerline length "C":

Ref: ELS-



Housing Protection and Material	
1	Ex II 1GD Alluminium
2	IP67 Alluminium
3	Ex II 2 GD Alluminium

Electrical Connection	
1	1/2" NPT F x 1
2	1/2" NPT F x 2
3	3/4" NPT F x 1
4	3/4" NPT F x 2
5	M20 x 1,5 x 2

Contacts	
A	1 x SPDT
B	2 x SPDT
C	1 x DPDT
D	2 x DPDT

Switch Type	
S	Standard
H	Hermetically Sealed
T	High Temperature
G	Golden Contacts
E	Sealed
X	Other, please specify

Float Material:		
A	316 SS	380°
B	Titanium	400°
X	Other, please specify	

Chamber Type	
S	Sealed
F	Flanged Head

Drain Connection	
1	1/2" NPT-F + (SS) PLUG
2	3/4" NPT-F + (SS) PLUG

### Options

Please Specify 2 digits code as located in this table

HT	Hydrostatic test ASTM-E-1003-95 and certificate
XR	X-ray inspection test and certificate
PI	Positive material identification test (PMI) and certificate.
DY	Dye penetrans test ASTM-E-1220-05 and certificate.
NT	Hardness test and certificate
RV	Forged root valves.
PC	PTFE coated
WT	Welding treatment and certificate.
SP	Special protective painting.
AJ	Set point adjustment and certificate.
AL	Air cooler extension.
SD	Special project requirements.

### Documentation

Please Specify 2 digits code as located in this table

01	Welding Book (WPS, PQR)
02	Material Certificate EN 10204 3.1
03	Dimensional drawings and parts in project format
04	Installation Manual
05	ATEX 94/9/EC compliance certificate and EC Mark co
06	Certificate of compliance and dimensional control
07	PED 97/23/EC compliance certificate
08	Special project documentation requirements

### Chamber Material

Please Specify 3 digits code as located in Material table (pag 10), example: 014 | Hastelloy

### Process Connection Configuration

SB	Side & Bottom
SS	Side & Side

### Process Connection Rating

	ANSI	DIN
1	1" 150# B 16.5/ B.S. 1560	11 PN16 -DN25
2	1" 300# B 16.5/ B.S. 1560	12 PN25/40 -DN25
4	1 1/2" 150# B 16.5/ B.S. 1560	13 PN16 -DN40
5	1 1/2" 300# B 16.5/ B.S. 1560	14 PN25/40 -DN40
7	1" 3000#. SW	15 PN40 -DN40
8	1" 3000#. BW	
9	1 1/2" 3000#. BW	
10	1 1/2" 3000#. SW	
XX	Other, please specify	

Please specify here your X or XX selected: