

Conformed Herschel Venturi

Low installation costs, vertically or horizontally, lower susceptibility to erosion, low permanent pressure loss and the possibility of using them on slurries and dirty fluids are some of the benefits of the venturi tubes, which ATC Control manufactures them in a wide range of variety. The main difference is that conformed Herschel venturi is built in welded metal sheet and used for low pressure applications.

Please fill in the required information:

Fluid: Clasificated Area (Y/N):

Specific Weight: s.w. Viscosity: cp

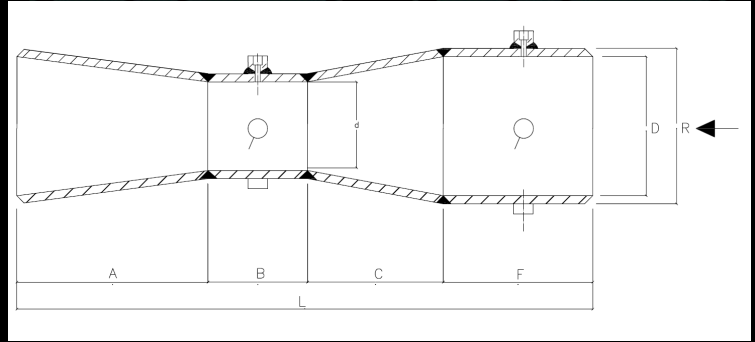
Outside Diameter/Pipe Size: mm/inch

Thickness/Schedule: mm/inch

Pressure: Min. bar Work bar Max. bar

Flow: Min. l/s Work l/s Max. l/s

Temperature: Min. °C Work °C Max. °C



Ref: CHV- 1 S XX 8 ES F11 F W A RTJ - F/N F11 001, 003 HT, DY

Bore Calculation

- A ASME MFC-3M
- B BS 1042
- C ISO 5167

Conical Divergent outlet

- L Longtype
- S Truncated

Outlet Angle

- XX 7° to 15°
- ST 15°

Taps Qty and Orientation

- 4 180° - 4 Taps
- 6 90° - 6 Taps
- 8 45° - 8 Taps
- X Other, Please Specify

Tapping connection

- DS 1/2" SW
- ES 3/4" SW
- DN 1/2" NPT-F
- EN 3/4" NPT-F
- EP 1/2" NPT-M Pipe
- DP 1/2" NPT-F Pipe
- XX Other, please specify

Venturi Material

- F05 A-182 F5
- F06 A-106 Gr B
- F09 A-182 F9
- F11 A-182 F11
- F22 A-182 F22
- F91 A-182 F91
- 304 A-182 F304/L
- 316 A-182 F316/L
- 904 A-182 F904L
- HAS Hastelloy
- MO Monel
- TIT Titanium
- XX Other, please specify

Section Ends

- F Flanged
- B Butt-Weld (pass to Documentation and Options.)
- T Threaded

Options

Please Specify 2 characters code as located in options table (pag 12)

- HT, DY For example: HT, DY
- HT Hydrostatic Test
- DY Dye Penetrants Test

Documentation

Please Specify 1 character code as located in doc. table (pag 13)

- 001, 003 For example: 001,003
- 001 Orifice Bore Calculation
- 003 Material Certificate EN 10204-3.1

Flanges Material

- A05 A-105
- F05 A-182 F5
- F09 A-182 F9
- F11 A-182 F11
- F22 A-182 F22
- F91 A-182 F91
- 304 A-182 F304/L
- 316 A-182 F316/L
- 904 A-182 F904L
- HAS Hastelloy
- MON Monel
- TIT Titanium
- XX Other, Please Specify

Flange Facing

- RF - C Raised Face RF
- RTJ - F/N Ring Type Joint RTJ
- FF - O Flat Face
- XX Other, please specify

Flange Rating

ANSI		DIN	
A	150#	G	PN 16
B	300#	H	PN 25
C	600#	I	PN 40
D	900#	J	PN 64
E	1500#	K	PN 100
F	2500#	L	PN 250
		X	Other, please specify

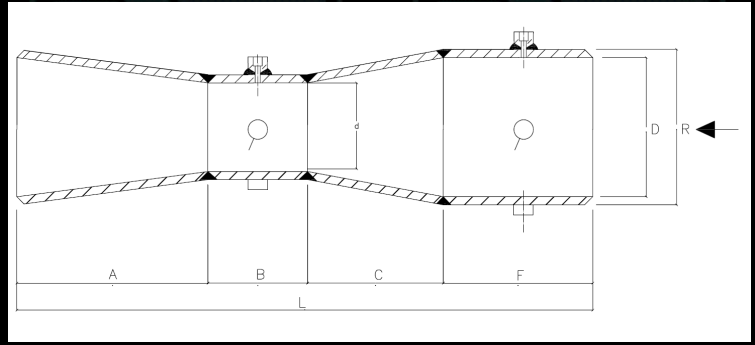
Flange Type

- W Welding Neck
- S Socket Welding
- X Other, please specify

Please specify here your X or XX selected:

Conformed Herschel Venturi

Low installation costs, vertically or horizontally, lower susceptibility to erosion, low permanent pressure loss and the possibility of using them on slurries and dirty fluids are some of the benefits of the venturi tubes, which ATC Control manufactures them in a wide range of variety. The main difference is that conformed Herschel venturi is built in welded metal sheet and used for low pressure applications.



Please fill in the required information:

Fluid: Clasificated Area (Y/N):

Specific Weight: s.w. Viscosity: cp

Outside Diameter/Pipe Size: mm/inch

Thickness/Schedule: mm/inch

Pressure: Min. bar Work bar Max. bar

Flow: Min. l/s Work l/s Max. l/s

Temperature: Min. °C Work °C Max. °C

Ref: CHV-

Bore Calculation

- A ASME MFC-3M
- B BS 1042
- C ISO 5167

Conical Divergent outlet

- L Longtype
- S Truncated

Outlet Angle

- XX 7° to 15°
- ST 15°

Taps Qty and Orientation

- 4 180° - 4 Taps
- 6 90° - 6 Taps
- 8 45° - 8 Taps
- X Other, Please Specify

Tapping connection

- DS 1/2" SW
- ES 3/4" SW
- DN 1/2" NPT-F
- EN 3/4" NPT-F
- EP 1/2" NPT-M Pipe
- DP 1/2" NPT-F Pipe
- XX Other, please specify

Venturi Material

- F05 A-182 F5
- F06 A-106 Gr B
- F09 A-182 F9
- F11 A-182 F11
- F22 A-182 F22
- F91 A-182 F91
- 304 A-182 F304/L
- 316 A-182 F316/L
- 904 A-182 F904L
- HAS Hastelloy
- MO Monel
- TIT Titanium
- XX Other, please specify

Section Ends

- F Flanged
- B Butt-Weld (pass to Documentation and Options.)
- T Threaded

Options

Please Specify 2 characters code as located in options table (pag 12)

For example: HT, DY

- HT Hydrostatic Test
- DY Dye Penetrants Test

Documentation

Please Specify 1 character code as located in doc. table (pag 13)

For example: 001,003

- 001 Orifice Bore Calculation
- 003 Material Certificate EN 10204-3.1

Flanges Material

- A05 A-105
- F05 A-182 F5
- F09 A-182 F9
- F11 A-182 F11
- F22 A-182 F22
- F91 A-182 F91
- 304 A-182 F304/L
- 316 A-182 F316/L
- 904 A-182 F904L
- HAS Hastelloy
- MON Monel
- TIT Titanium
- XX Other, Please Specify

Flange Facing

- RF - C Raised Face RF
- RTJ - F/N Ring Type Joint RTJ
- FF - O Flat Face
- XX Other, please specify

Flange Rating

ANSI		DIN	
A	150#	G	PN 16
B	300#	H	PN 25
C	600#	I	PN 40
D	900#	J	PN 64
E	1500#	K	PN 100
F	2500#	L	PN 250
		X	Other, please specify

Flange Type

- W Welding Neck
- S Socket Welding
- X Other, please specify

Please specify here your X or XX selected: