

**SELF CONTAINED LED EMERGENCY  
E-SPOT 250 AT**

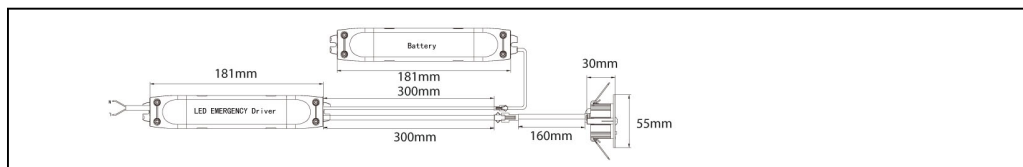


Self contained LED 3W emergency. Non-maintained self-test function. Includes two interchangeable lenses for open and corridor area. Designed in small size and round shape for recessed mounting. Great ease of installation. It has two coloured LED signaling integrated in the equipment.

**Characteristics:**

|                          |   |
|--------------------------|---|
| Model                    | <b>E-SPOT 250 AT</b>                                      |
| Supply                   | 230V~ 50/60Hz (220-240VAC)                                |
| Functioning              | Non maintained  |
| Power                    | 3W  |
| Input current            | <0,02A  |
| Check                    | Self-test   |
| Lumens                   | 250 Lm  |
| Autonomy                 | 1 hour  |
| Battery                  | LiFePO4 6,4V-600mAh                                       |
| Battery charging         | 24 hours  |
| LED                      | SAMSUNG 3535  |
| Colour temperature (CCT) | 5000K   |
| Lense (2 types included) | Open (for open area) and corridor (for evacuation routes) |
| Output voltage (LED)     | 2,8 -3,2VDC   |
| Output current (LED)     | 600mA   |
| Protection class         | Class II  |
| Grade IP                 | IP40  |
| Circuit protections      | Short-circuit / Overloading / Overtemperature             |
| Wrapping material        | Aluminium + PC  |
| Mounting                 | Recessed  |
| Operating temperature    | 0 - 45°C  |
| Ambient temperatura      | 0 - 65°C  |
| Weight                   | 0,26Kg  |
| CE marked                | According standards 2014/35/UE and 2014/30/UE of EMC      |
| Manufactured             | According standard: UNE-EN 60598-2-22                     |

**Dimensions:**



**Self-test:**

Once the equipment is connected, a self-test is automatically initiated in this way:

- Every 4 sec.: verifies battery disconnection and voltage, charger failure and AC/DC converter fault.
- Every month runs a 3 min. test of duration.
- Every year it runs a test of 1 hour.

**Signaling:**

Two coloured LED indicator:

GREEN fixed light: Operation OK.

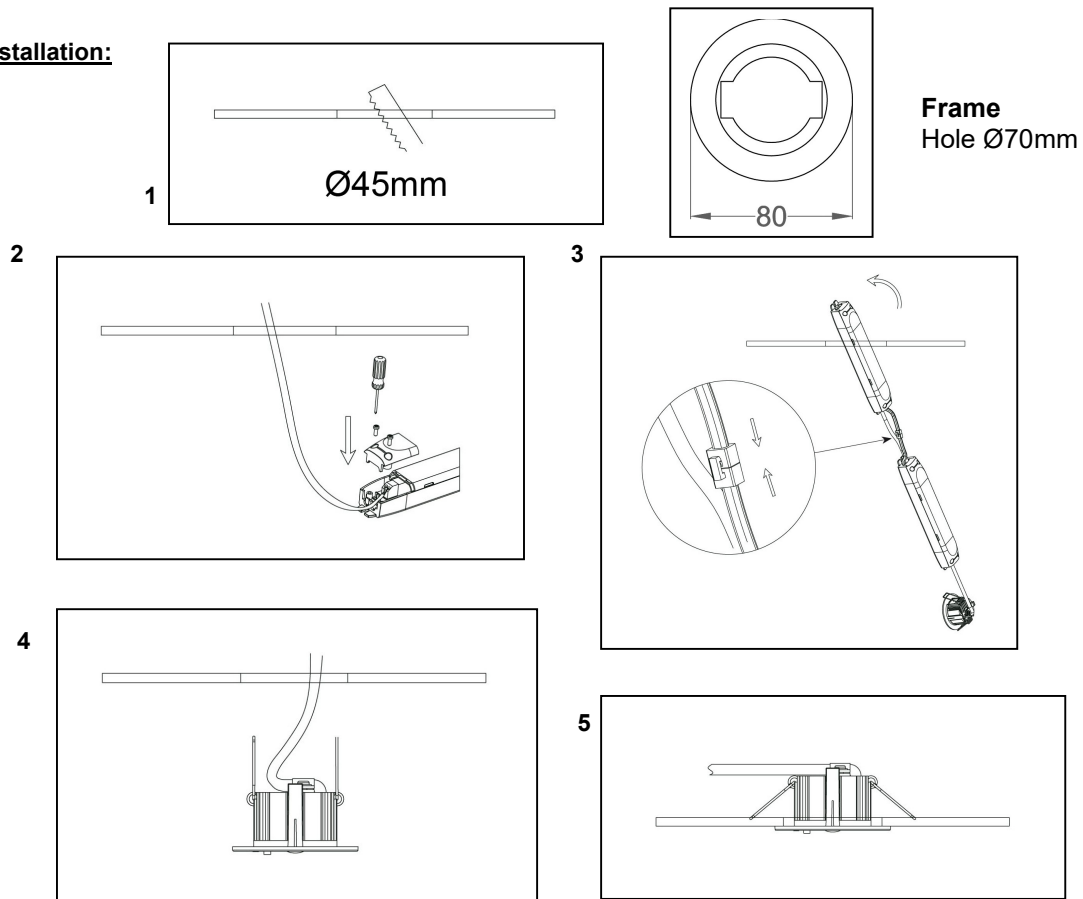
RED blinking: Failure, according to the following signaling:

|       |                                |                         |
|-------|--------------------------------|-------------------------|
| *     | 1 blinking and pause of 4 seg. | Battery not connected   |
| **    | 2 blinking and pause of 4 seg. | Low battery voltage     |
| ***   | 3 blinking and pause of 4 seg. | Battery charger failure |
| ****  | 4 blinking and pause of 4 seg. | AC/DC converter failure |
| ***** | 5 blinking and pause of 4 seg. | LED lamp failure        |

**Manual test:**

|   |                          |
|---|--------------------------|
| Press the test button once                  | 30 sec. test of duration |
| Press the test button twice in 2 sec.       | 3 min. test of duration  |
| Press the test button three times in 2 sec. | 30 min. test of duration |
| Press the test button four times in 2 sec.  | 1 hour of duration       |

**Installation:**

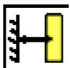
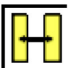


- 1.- Make a hole in the ceiling with a diameter of **45mm** (42-50mm).
- 2.- Remove the main cable from the installation through the hole and connect the equipment to the L & N terminal strip (230VAC).
- 3.- Connect the battery with the electronic equipment through the polarized connector. Insert the equipment, battery and LED lamp in the hole of the false ceiling in this order.
- 4.- Lift springs of the LED lamp and insert it into the hole.
- 5.- Once the lamp is fixed, give the equipment a mains voltage and check that the indicator LED lights up in Green.

**Maintenance:**

The manipulation and the installation of the device should be done by qualified technicians. Always verify that the voltage of the mains is adequate to the input voltage of the device. Before installation make sure the mains is off. The LiFePO4 battery must be replaced when the equipment's autonomy time is less than 1 hour. It is convenient to write down the date of the change. The old battery should be recycled in a proper way, as it can be harmful for the environment

**Table of distances of the evacuation route**  
Minimum 1 lux on the evacuation route

| Mounting height (m) |  |  |
|---------------------|---|---|
| 2.50                | 8.75  | 20.00   |
| 3.00                | 8.75  | 21.00   |
| 4.00                | 8.00  | 22.00   |
| 5.00                | 7.00  | 21.25   |