

Serie ANTARES LED

Emergency lighting



ANTARES AN-200 LED



Installation

Ceiling, Surface or recessed mounting. (For recess mounting use accessories ST-21 & ST-26, see accessories page 16)

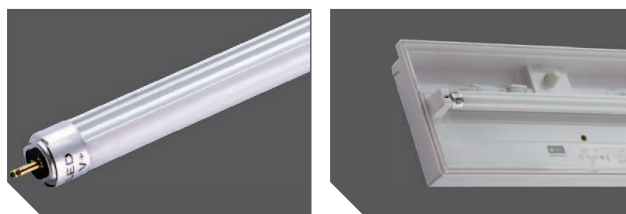
Optical part

Polycarbonate transparent diffuser. Pictograms (see page 41)

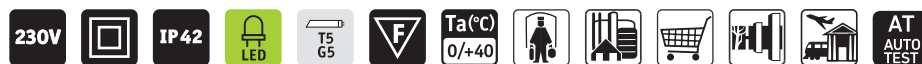


Design

Poly carbonate housing and diffuser, manufactured in conformity with Norms EN60598-2-22 & UNE 20-392-93. PATENT LED LAMP, easily replaceable and provides a stable illumination. Lamps included.



LED lamp radiator



Model	Type	IP	Weight	Autonomy	Lumens	Battery	Lamp	Code
ANTARES AN-100 LED	M/NM	42	1	1	120	6.0 V 0.8A*h	3.6 W LED(G5)	4502002600
ANTARES AN-150 LED	M/NM	42	1	1	160	6.0 V 0.8A*h	3.6 W LED(G5)	4502002610
ANTARES AN-200 LED	M/NM	42	1.0	1	218	6.0 V 0.8A*h	3.6 W LED(G5)	4501006390
ANTARES AN-203 LED	M/NM	42	1.0	3	187	6.0 V 1.5A*h	3.6 W LED(G5)	4501006400
ANTARES SIGN LED	AC/DC	42	0,9		220	-	3.6 W LED(G5)	4501007060
ANTARES AN-100 LED AT	M/NM	42	1	1	120	6.0 V 0.8A*h	3.6 W LED(G5)	4502002620
ANTARES AN-150 LED AT	M/NM	42	1	1	160	6.0 V 0.8A*h	3.6 W LED(G5)	4502002630
ANTARES AN-200 LED AT	M/NM	42	1.0	1	218	6.0 V 0.8A*h	3.6 W LED(G5)	4502002550

*NM: NON MAINTAINED / *M: MAINTAINED / *AT: AUTO TEST