

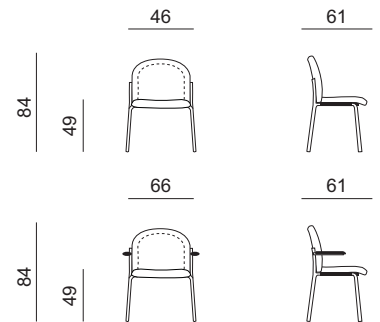
MODELOS

4 patas / 4 pieds

- Respaldo bajo y asiento tapizado.
- Gomaespuma densidad 30 kg asiento , 25 kg respaldo.
- Silla apilable (4 unidades).
- Posibilidad brazos fijos de poliuretano.
- Estructura en epoxi negro opción en epoxi gris tubo 25 x 1,5 m.m.
- Pala de escritura antipánico.



MANON 1



ACABADOS / FINITIONS

Tapizados / Rêvetements

La carta de tapizados se encuentra al final del la tarifa.

Estructuras / Structures

epoxi aluminio
RAL 9006

epoxi negro
RAL 9011

Detalles / Opciones / Details / Options



brazos poliuretano/ accoudoirs polyuréthane



pala para escritura/ tablette d'écritoire



apilable en todas las versiones/empilable



apilable / empilable




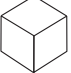

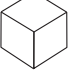

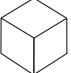
carro para transporte/ chariot




detalle transporte / detail transport

PRECIO / PRIX

4 Patas / 4 Pieds

| | | ESTRUCTURA STRUCTURE | BRAZOS ACCOUDOIRS | roy bonday, point | nappel , exit | trevira-cs londres M1 | piel vacuna | tela cliente | PACKING |
|---------|------------------------------------------------------------------------------------|-------------------------|-----------------------------------------------------|----------------------|---------------|--------------------------|-------------|--------------|-------------------------------------------------------------------------------------------------------------------------------------------|
| manon 1 |  | epoxi negro gris | | 83,54 € | 91,90 € | 98,57 € | 142,51 € | 80,20 € | Vol.: 0,37 m3 Kg.: 28,00  1 bulto - 4 unidad |
| manon 2 |  | epoxi negro gris | poliuretano polyuréthane | 115,67 € | 127,25 € | 136,49 € | 197,32 € | 111,23 € | Vol.: 0,44 m3 Kg.: 30,00  1 bulto - 4 unidad |
| manon 3 |  | epoxi negro gris | poliuretano + pala polyuréthane + tablette | 136,02 € | 149,61 € | 160,50 € | 232,04 € | 130,58 € | Vol.: 0,44 m3 Kg.: 34,00  1 bulto - 4 unidad |

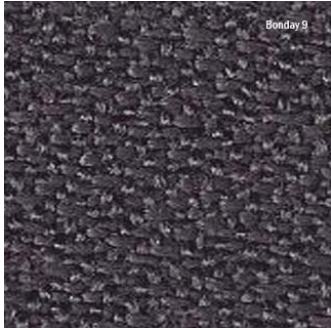
Carro / Chariot

| | | | | | | | | | |
|----------------------------------|-------------------------------------------------------------------------------------|--|--|--|--|---------|--|--|--|
| carro para transporte/apilado |  | | | | | 52,24 € | | | |
|----------------------------------|-------------------------------------------------------------------------------------|--|--|--|--|---------|--|--|--|

CATALOGO DE TAPIZADOS GRUPO I

BONDAY

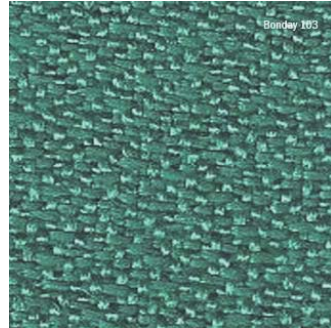
COLORES SUJETOS A DESVIACIONES LÓGICAS DEL PROCESO DE IMPRESIÓN



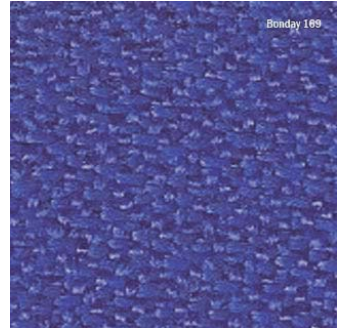
9



5518



103



169



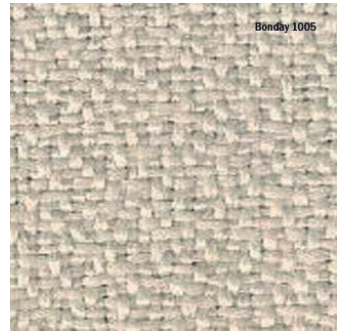
5005



79



76

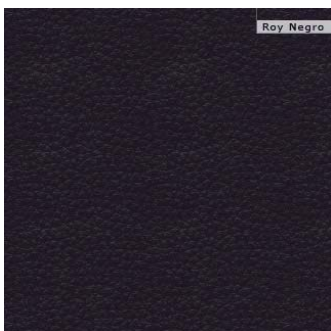


1005

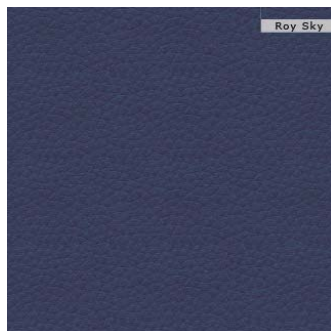
CATALOGO DE TAPIZADOS GRUPO I

ROY

COLORES SUJETOS A DESVIACIONES LÓGICAS DEL PROCESO DE IMPRESIÓN



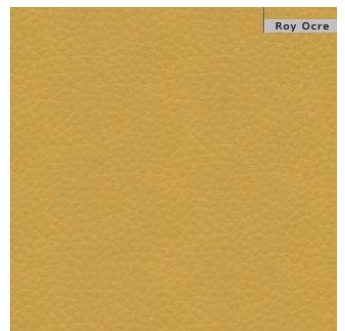
Negro



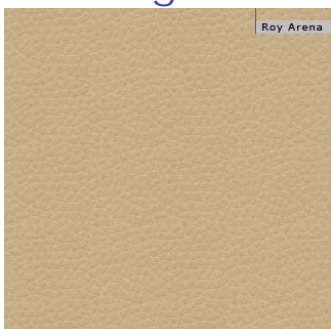
Sky



Caramel



Ocre



Arena

CATALOGO DE TAPIZADOS GRUPO I

POINT

COLORES SUJETOS A DESVIACIONES LÓGICAS DEL PROCESO DE IMPRESIÓN



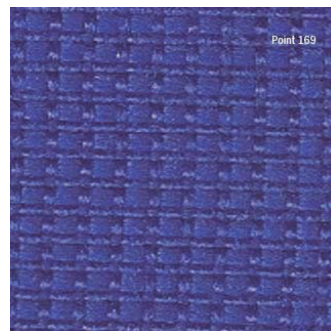
9



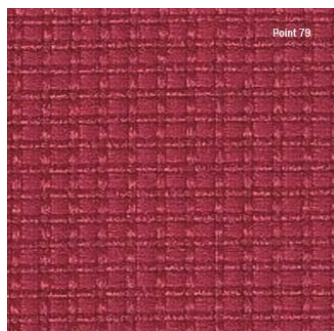
5518



81



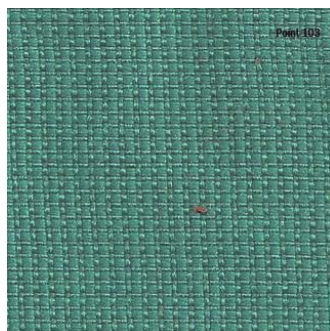
169



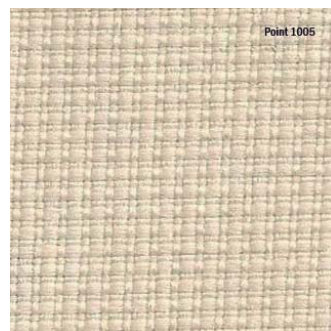
79



76



103

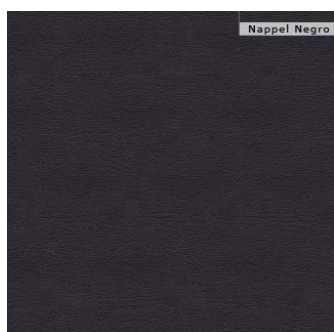


1005

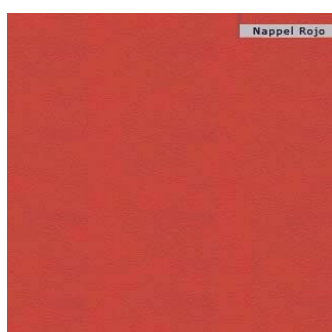
CATALOGO DE TAPIZADOS GRUPO II

NAPPEL

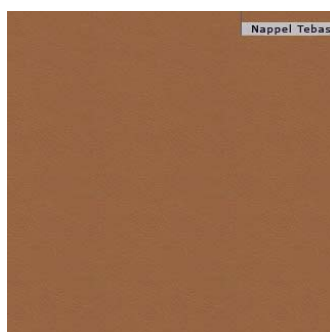
COLORES SUJETOS A DESVIACIONES LÓGICAS DEL PROCESO DE IMPRESIÓN



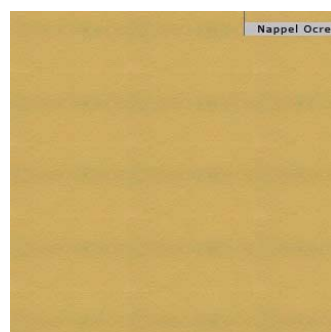
Negro



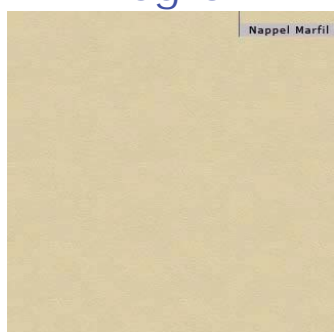
Rojo



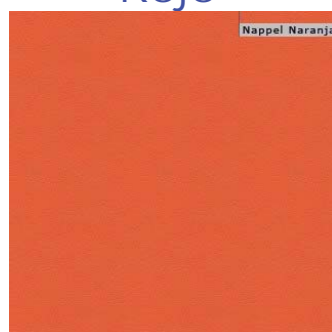
Tebas



Ocre



Marfil

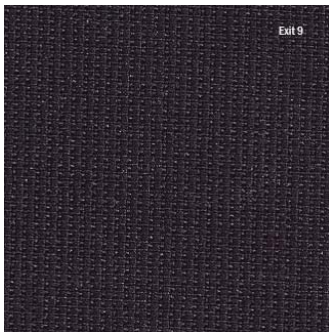


Naranja

CATALOGO DE TAPIZADOS GRUPO II

EXIT

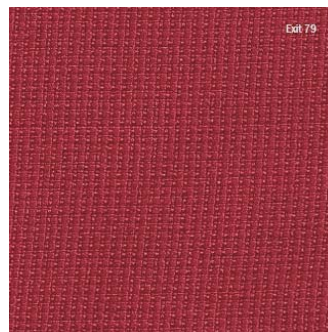
COLORES SUJETOS A DESVIACIONES LÓGICAS DEL PROCESO DE IMPRESIÓN



9



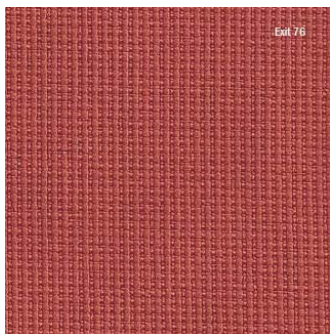
209



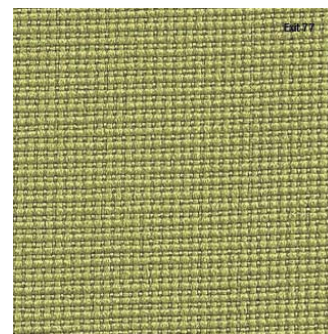
79



434



76



77

CATALOGO DE TAPIZADOS GRUPO III

LONDRES

COLORES SUJETOS A DESVIACIONES LÓGICAS DEL PROCESO DE IMPRESIÓN



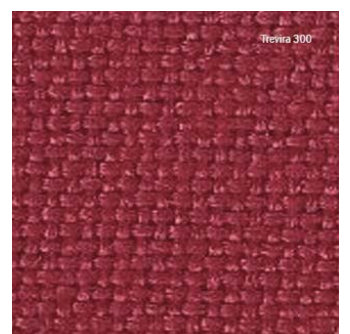
800



205



209



300



76



159



212

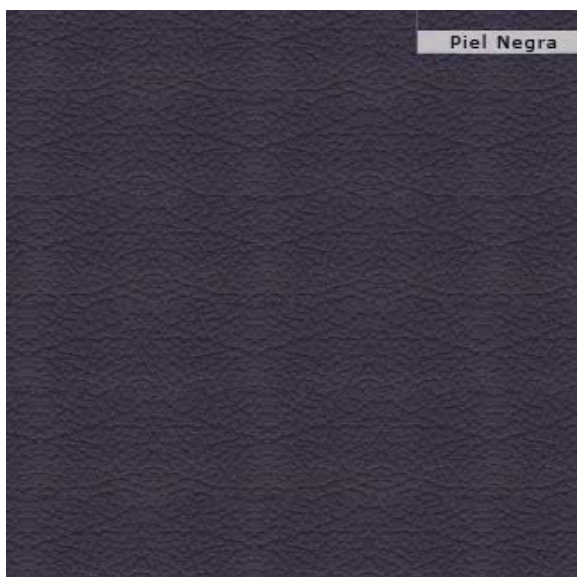


116

CATALOGO DE TAPIZADOS GRUPO IV

PIEL

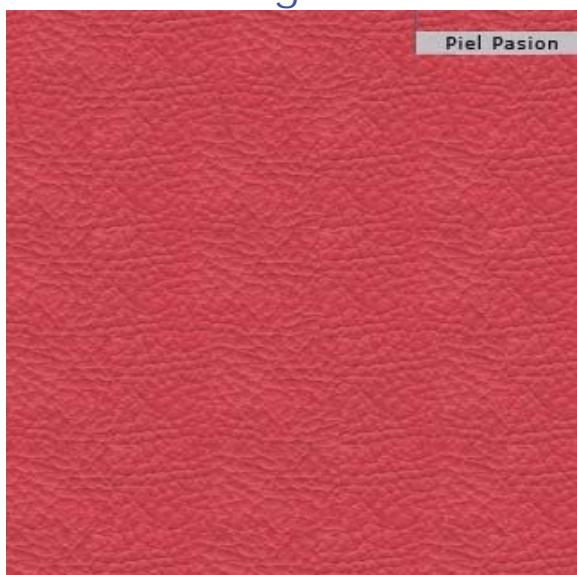
COLORES SUJETOS A DESVIACIONES LÓGICAS DEL PROCESO DE IMPRESIÓN



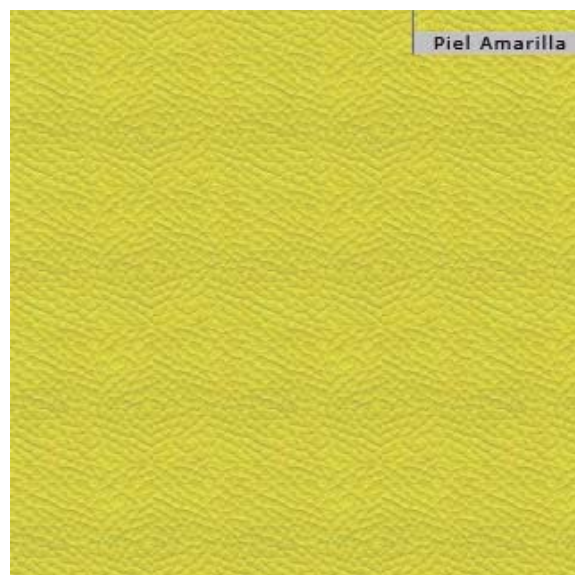
Negro



Cuero



Pasión



Amarillo



Hielo