

TITAN-PORT[®] PD and PC

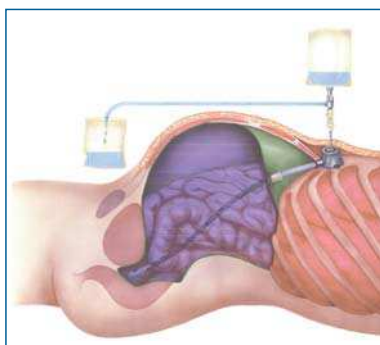
Implantable Port catheter systems for
peritoneal dialysis (PD)
peritoneal chemotherapy (PC)

Indications:

- Peritoneal dialysis
- local abdominal chemotherapy



Art. No.	PORT					CATHETER	
	Material	Base mm	Height mm	Septum ø mm	Weight g	Material	French
111253 PD Peritoneal dialysis	Titan	29	15	15	<18	Silicone	14,5
111256 PC Peritoneal chemotherapy	Titan	29	15	15	<18	Polyurethane	13,5

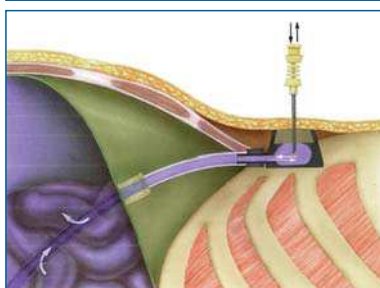


Advantages of Titanium

excellent biocompatibility, non magnetic, no chemical reactions, light weight, hypoallergenic

Product specifications:

- catheter with perforations (according Type PD + PC)
- self sealing silicone membrane
- easy and safe connection port chamber/catheter



Port needles

Puncture of port chamber only with special port needles provided e.g.

Art.-No.	CANULAE			
	Ø mm	Length mm	Unit	Extra
DPK 1835	1,8	35	25 pcs	with tubing
DPK 2035	2,0	35	25 pcs	with mandrin + needle free adapter

or other high flow SFN[®]- port needles



SET complete:

- 1 Titan-Port + 1 screw, 1 single-lumen catheter,
- 1 special puncture needle for dialysis, 1 introducer set,
- 1 tunnelizer

example