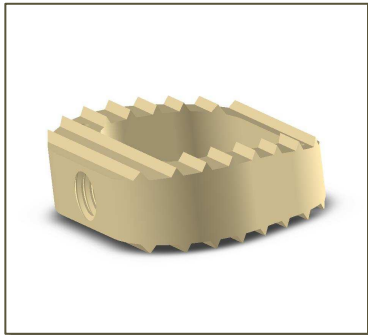
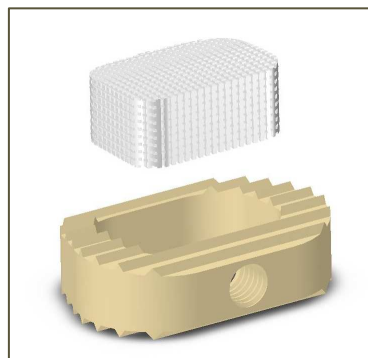


Squale *Anatomic cervical cage & synthetic bone graft*

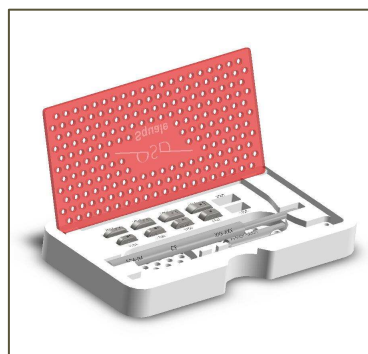
For simple and effective
vertebral body fusion



OXPEKK® implant



Implant and synthetic bone graft



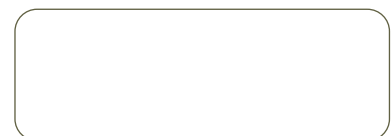
Squale instrumentation set

- **Excellent stability and perfect Positioning of the implant**
 - Design adapted to vertebral anatomy
 - Anti-migration grooves to avoid micro-movements
- **A safe and effective operating technique**
 - Safe and easy to impact
 - Implant delivered in sterile packaging
- **Intersomatic fusion**
 - Wide bone graft area
 - Ideal sizing of synthetic bone graft

References Cervical cage	Description Width x height	References Synthetic bone graft
SQA-1704S	Cervical cage 17 x 4 mm	SQA-SO-1704
SQA-2004S	Cervical cage 20 x 4 mm	SQA-SO-2004
SQA-1705S	Cervical cage 17 x 5 mm	SQA-SO-1705
SQA-2005S	Cervical cage 20 x 5 mm	SQA-SO-2005
SQA-1706S	Cervical cage 17 x 6 mm	SQA-SO-1706
SQA-2006S	Cervical cage 20 x 6 mm	SQA-SO-2006
SQA-1707S	Cervical cage 17 x 7 mm	SQA-SO-1707
SQA-2007S	Cervical cage 20 x 7 mm	SQA-SO-2007

Cage of 8 mm height available on special request

Distributed by



ORTHOPAEDIC & SPINE DEVELOPMENT

